



Abbeville Road, Clapham, SW4

1 bedroom flat for sale

£425,000

Leasehold

Property Details

A bright, one double bedroom top floor apartment, set within a beautiful Victorian conversion on the highly sought-after Abbeville Road. A complete blank canvas, the apartment is ready to move into with the potential to add your own touches over time, enhancing the lovely features and bringing the home to life. Set to the upper floors the home benefits from a bright and private ambience throughout. The stunning open plan kitchen reception is spacious with plenty of character and room for a dining area and living area, ideal for entertaining or simply unwinding. The kitchen neatly wraps around, maximising storage and worktop space, framing the dining area. Multiple skylights and windows allow plenty of natural light to flood in whilst the lofty ceilings add to the charm. Down a small flight of stairs you find the spacious double bedroom, a calm and comfortable space, peacefully nestled away from the street with leafy views over the neighbouring gardens, with plenty of space for storage options. Adjacent, the neutral bathroom is equipped with a shower over the bath, ideal for a soak in the bubbles after a stroll around nearby Clapham Common.

Features

- One double bedroom
- Open plan reception and kitchen
- Victorian conversion
- Light and airy
- Green open spaces of Clapham Common a five-minute stroll
- Northern Line an eight-minute walk
- Upmarket Abbeville Village moments away
- Prime location
- Chain-free
- Share of freehold will be granted

Council tax band D

EPC rating D (56)

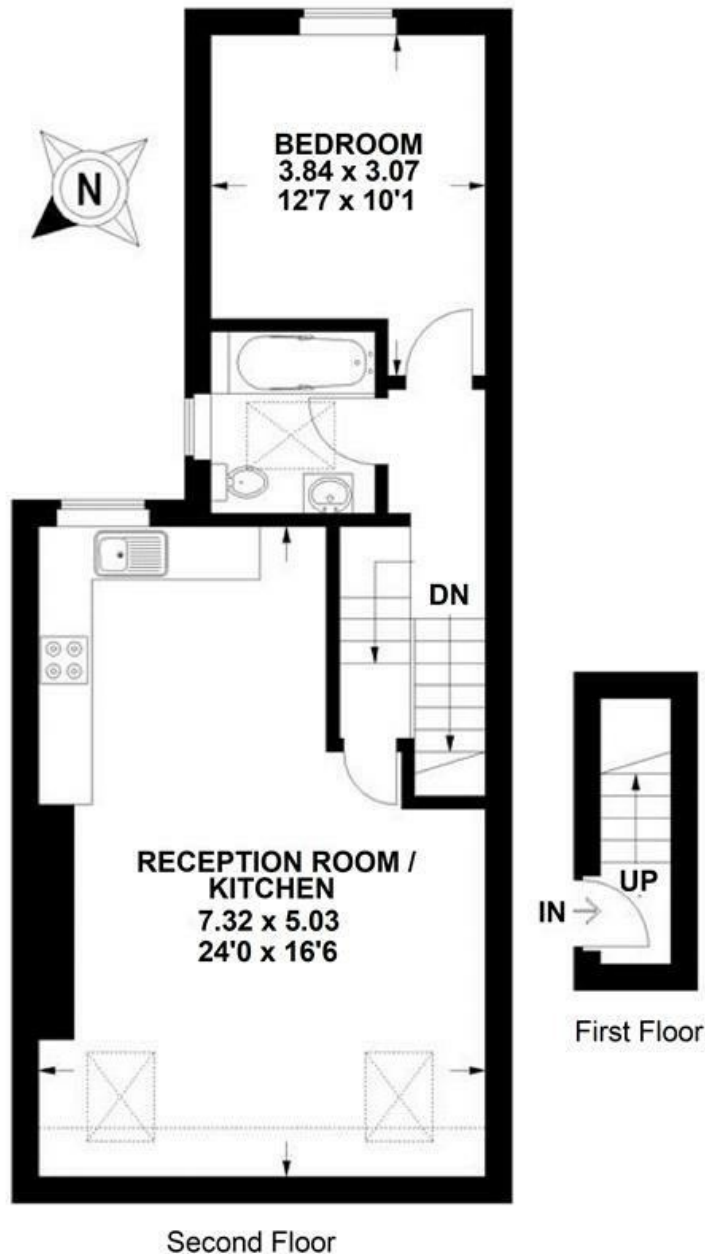


Abbeville Road, Clapham, SW4

Abbeville Road, SW4

1 Bedroom Flat

APPROXIMATE GROSS INTERNAL AREA: 612 SQ FT / 56.9 SQ M



 = Reduced headroom below 1.5m / 5'0.



While we try our very best, floor plans are produced as a guide only and we take no responsibility for the precise accuracy with which any property is represented.

Abbeville Road, Clapham, SW4

